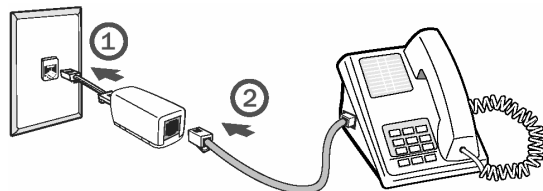


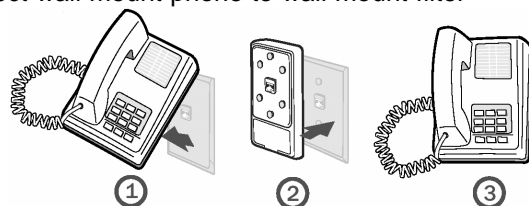
Step 1: Filter desktop phones

- Disconnect desktop phone
- Connect line filter to phone jack
- Connect desktop phone to line filter



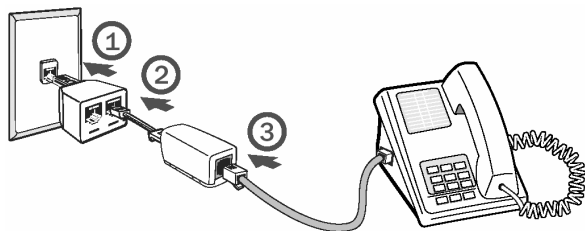
Step 2: Filter wall mount phones

- Disconnect wall mount phone
- Connect wall mount filter to phone jack
- Secure filter by moving the locking tabs in place
- Connect wall mount phone to wall mount filter



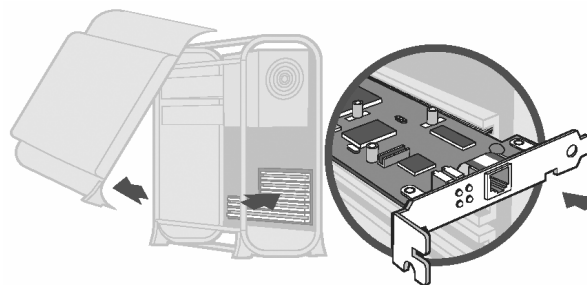
Step 3: Install two-to-one adapter (optional)

- Plug adapter into phone jack
- Plug line filter into one socket of the two-to-one adapter
- The other socket will be used to connect the DSL modem
- Plug the telephone cord (or other device) into the line filter



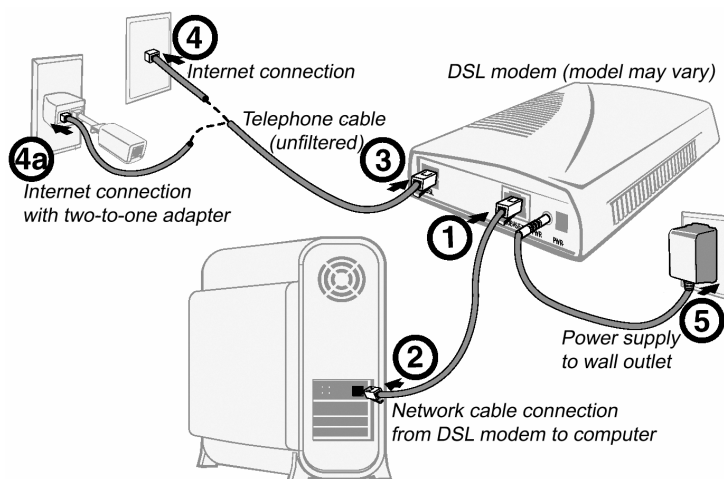
Step 4: Install network card

- Disconnect power cord from computer, remove cover
- Insert network card into motherboard, secure with screw
- Replace computer cover, reconnect power
- Follow Windows prompts for 'Add New Hardware' wizard



Step 5: Install DSL modem

- Connect phone, network, power cables as shown below
- Optional setup using two-to-one adapter is also shown



Step 6: Install computer software *

Directions for Windows 95/98/NT/Me/2000

- Insert mDirect CD into CD-Rom drive
- Click [START] → [Run], type D:\mDirect300\setup.exe
Where D:\ is the CD-Rom drive letter
- Follow on screen instructions
- Install speed patch, located in the D:\Patches\Win[xx] folder
- Right-click on the file called 'Windows PPPoE Patch'
- Select install or merge from the menu. A reboot is required

Directions for Windows XP and newer

- The mDirect CD is NOT required for Windows XP
- Click [Start] → [Connect to] → [Show all connections]
- In 'Network tasks', click 'Create a new connection'
- Follow on screen instructions

Notes:

- All telephone devices including portable phones, caller-id boxes, fax machines, alarm systems require a dsl filter
- * For further instructions, view the manual on the mDirect CD