



SPEED TOUCH PC

ADSL PC Network Interface Card

Installation Guide

Microsoft Windows 95A, 98 and NT4.0

VERSION 2.1.1 – for CD-ROM Installation

November 9, 1999



SPEED TOUCH PC

ADSL PC Network Interface Card

Installation Guide

Microsoft Windows 95A, 98 and NT4.0

VERSION 2.1.1– for CD-ROM Installation

November 9, 1999

TABLE OF CONTENTS

Introduction.....	1
System Requirements.....	1
Determining Your Service Type.....	3
Technical Support.....	3
Before Installation.....	4
Hardware Installation.....	4
Software Installation and Service configuration.....	4
Point to Point Protocol over ATM (PPPoA) or (RFC 2364).....	5
Windows 95A.....	5
Windows 95B.....	7
Windows 98, 98A.....	9
Windows NT 4.0.....	14
PPPoA ADSL Network Connection.....	21
Bridged Ethernet Service or (RFC 1483).....	23
Windows 95A.....	23
Windows 95B.....	25
Windows 98, 98A.....	27
Bridged Ethernet ADSL Service Configuration.....	29
Windows NT 4.0.....	31
Editing Bridged Ethernet ADSL Service Configuration.....	34
Diagnostic Tools.....	36
Appendix A – Upgrade Microsoft DUN Version 1.3.....	37
Appendix B – Verifying Dial-Up Networking (DUN) Status.....	38
Appendix C – Removing Speed Touch PC NIC Drivers.....	39
Windows 95, 98.....	39
Windows NT4.0.....	39
Appendix D – System Requirements & Compliance Information.....	41
Appendix E – Copyright & Regulatory Information.....	42

INTRODUCTION

Congratulations! You'll soon have the fastest connection available to the Internet – thanks to Alcatel's Speed Touch PC. The Alcatel Speed Touch PC is an internal Asymmetric Digital Subscriber Line (ADSL) PC Network Interface Card (NIC), which conveniently plugs into your computer system. Alcatel's Speed Touch PC connects directly to your telephone line via a standard RJ-11 connector and is fully plug-and-play compatible.

This guide is designed to walk you through the installation of your Speed Touch PC in the easiest and quickest way possible. Please follow the instructions carefully.

SYSTEM REQUIREMENTS

Make sure your PC system meets **ALL** of the following minimum hardware requirements and has one of the following software Operating Systems installed.

Note: Install this board only in UL Listed equipment that has instructions stating that the user may install and remove boards.

Hardware:

- IBM PC/AT or compatible
- Pentium 100Mhz or faster
- 30Mbytes available hard disk space or more
- 2x CD-ROM drive or better
- 32Mbyte available system memory or more

Software: Your Operating System must be one of the following:

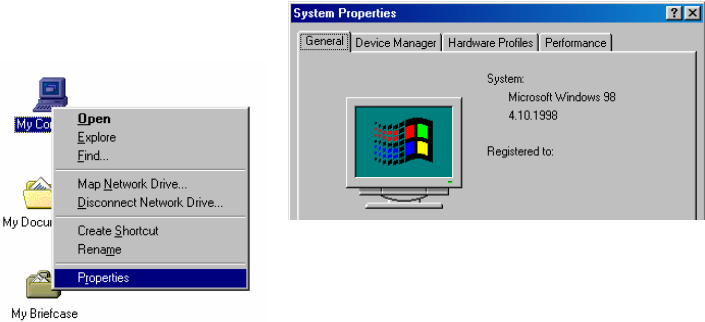
- ✓ Microsoft Windows 95.x – 95A, 95B
- ✓ Microsoft Windows 98.x – 98, 98A
- ✓ Microsoft NT – NT 4.0 Service Pack 3

Provided here for your convenience is a work sheet that will help you gather all the information you will need to install your Alcatel Speed Touch PC. Please gather all the necessary information before continuing.

You will need to know the exact version of Microsoft Windows installed in your computer. If you do not know or are unsure, please proceed as follows to determine your version of the Microsoft Operating System.

**Alcatel Speed Touch™ PC
Installation Guide**

On the desktop, right click **My Computer**. Then select **Properties**. The version number of the Microsoft Windows Operating System installed in your computer will be displayed. Refer to the following table for more detailed information.



Windows Version	System Description on System Properties	Official Release Name (on Microsoft Web page)
Win 95A	4.00.950A	Windows 95 OSR1
Win 95B	4.00.950B	Windows 95 OSR2
Win 98	4.10.1998	Window 98
Win 98A	4.10.2222A 2nd	Windows 98 2nd Edition

DETERMINING YOUR SERVICE TYPE

Contact your Internet Service Provider (ISP) for your service type and connection configuration. Your service type is one of the following:

- 1) **Bridged Ethernet Service** or (RFC 1483)
- 2) **Point to Point Protocol over ATM (PPPoA)** or (RFC 2364)

⇒ If your service is **Bridged Ethernet** you will need to know the following:

<u>IP Address</u>	<table border="1"><tr><td>.</td><td>.</td><td>.</td></tr></table>	.	.	.
.	.	.		
<u>Subnet Mask</u>	<table border="1"><tr><td>.</td><td>.</td><td>.</td></tr></table>	.	.	.
.	.	.		
<u>Gateway</u>	<table border="1"><tr><td>.</td><td>.</td><td>.</td></tr></table>	.	.	.
.	.	.		
<u>(Domain Name Service) DNS Host</u>	_____			
<u>DNS Domain</u>	_____			
<u>1DNS Server</u>	<table border="1"><tr><td>.</td><td>.</td><td>.</td></tr></table>	.	.	.
.	.	.		
<u>2DNS Server</u>	<table border="1"><tr><td>.</td><td>.</td><td>.</td></tr></table>	.	.	.
.	.	.		
<u>3DNS Server</u>	<table border="1"><tr><td>.</td><td>.</td><td>.</td></tr></table>	.	.	.
.	.	.		
<u>The values of VPI and VCI</u>	VPI = ____ VCI = ____ Default VPI=0, VCI=35			

⇒ If your service is **PPPoA** you will need to know the following:

<u>User Name</u>	_____
<u>Password</u>	_____
<u>Logon Domain</u>	_____
<u>The values of VPI and VCI</u>	VPI = ____ VCI = ____ Default VPI=0, VCI=35

TECHNICAL SUPPORT

- If you have questions regarding your PC system and the Microsoft Windows Operating System, please contact your original PC manufacturer or Microsoft for assistance.
- If you have questions regarding Speed Touch PC, please refer to the Speed Touch PC User Manual contained on the Alcatel CD supplied, or visit the Web site: www.alcateldsl.com

BEFORE INSTALLATION



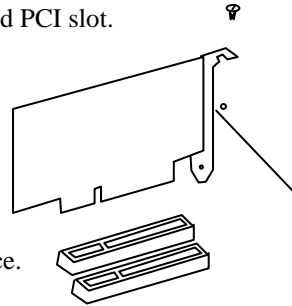
If you are installing PPPoA service for Win95A, 95B or Bridged Ethernet service for Win95A, you need to upgrade your Dial-Up Networking (DUN) application to version 1.3 or above. Please refer to **Appendix A** on how to upgrade your system's DUN.

HARDWARE INSTALLATION

To install the **Alcatel Speed Touch PC** in your PC, proceed through the following steps:

WARNING! To avoid possible damage to your **Speed Touch PC** card you need to use an anti-static grounding device or hold onto the metal chassis of the PC to provide anti-static grounding.

1. Shut down the system and switch the power **off**.
2. Unplug the AC power cable from the PC.
3. Remove the cover from the PC chassis.
4. Unscrew the "slot cover bracket" from an unused PCI slot.
5. Insert the card into an empty PCI slot.
6. Firmly press the Speed Touch PC card into the slot and secure the card to the chassis with the chassis bracket screw.
7. Connect one end of a phone cable to the RJ-11 port on the Speed Touch PC card and plug the other end of the cable into the ADSL data service.
8. Plug the power cable back into the PC system.
9. Power-up the PC and proceed to software installation.



SOFTWARE INSTALLATION AND SERVICE CONFIGURATION

NOTE: You may need the Microsoft Windows Operating System installation files (CAB files) to complete the installation. The CAB files are contained in the Microsoft's system CD. Some systems may have already installed the CAB files to the hard drive, but you should have the Microsoft CD handy just in case.

TO INSTALL POINT TO POINT PROTOCOL OVER ATM SERVICE

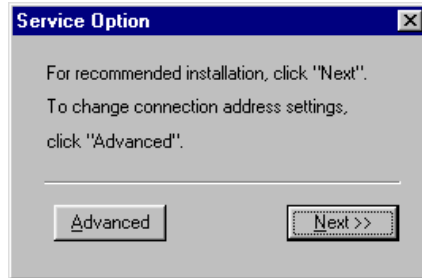
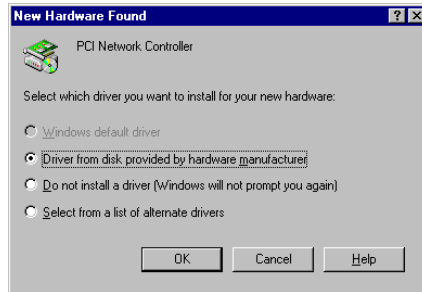
- ⇒ Win95A go to page 5
- ⇒ Win95B go to page 7
- ⇒ Win98, 98A go to page 9
- ⇒ NT 4.0 go to page 14

TO INSTALL BRIDGED ETHERNET SERVICE

- ⇒ Win95A go to page 23
- ⇒ Win95B go to page 25
- ⇒ Win98, 98A go to page 27
- ⇒ NT 4.0 go to page 31

POINT TO POINT SERVICE FOR WINDOWS 95A

1. After installing the **Alcatel Speed Touch PC** card, power on the PC system. The **Hardware Wizard** will detect the card as a **PCI Network Controller**. Select the **Driver from disk provided by hardware manufacturer** option. Click **OK**.
2. Insert the **Alcatel Speed Touch PC Driver** CD into the drive.
3. The **Install From Disk** window appears. Enter the <CD drive letter> :\PPPoA9x (e.g. D:\PPPoA9x), then click **OK**.
4. When the **Service Option** window appears, click **Next** for the default installation. For Advanced settings, please consult your ADSL service provider for detailed information.

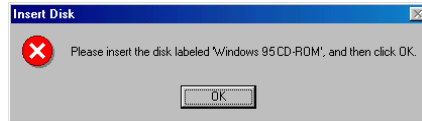
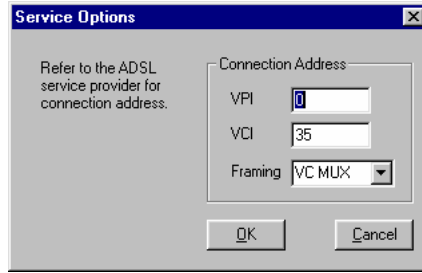


**Alcatel Speed Touch™ PC
Installation Guide**

NOTE: If you clicked **Advanced**, the **Service Options** window shows the **Connection Address**. Enter the service **Connection Address**, click **OK**. The previous **Service Option** window will appear, click **Next**.

NOTE: During the installation process you may be asked to insert your Windows 95. Insert the **Windows 95 CD** into the CD drive and click **OK**.

NOTE: If during the file copying process a file is reported as “not found” enter the path <CD Drive letter> :\Win95 (e.g. D:\Win95)



5. At the conclusion of the Speed Touch PC driver installation, the Diagnostic Tools icon is active and monitoring connectivity. The **Diagnostic Tools** – found on the task bar – with blinking (or solid) **Black or Green** lights indicates a good connection. **Diagnostic Tools** with **Red** lights indicate a connection error or driver load error. Verify that the cable is properly connected to the data port of the service and the Speed Touch PC card.
6. You must now make a network connection, **go to page 21**.

POINT TO POINT SERVICE FOR WINDOWS 95B

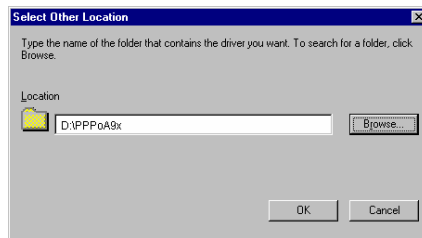
1. After installing the **Alcatel Speed Touch PC** card, power-up the PC system. The Hardware wizard will detect the Alcatel Speed Touch PC as a **PCI Network Controller**, click **Next**

2. Insert the **Alcatel Speed Touch PC Device Driver** CD into the CD drive. Then click **Other Locations**.

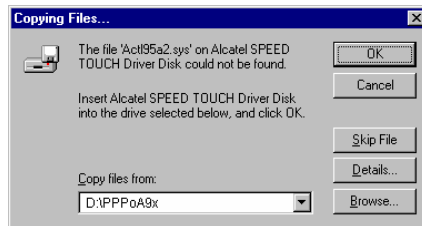
Note: If the driver is not detected, click **Back**, insert the **Speed Touch PC** disk, then click **NEXT**.



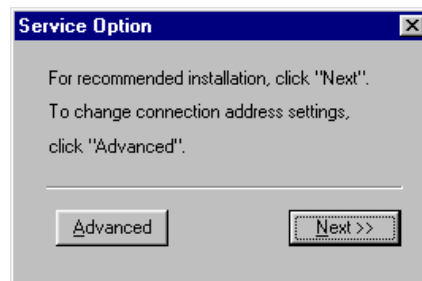
3. When **Select Other Location** window appears, enter <CD drive letter> :\PPPoA9x (e.g. D:\PPPoA9x) and click **OK**.



4. The **Update Device Driver Wizard** window appears. Click **Finish**. The **Insert Disk** window appears. Click **OK**.

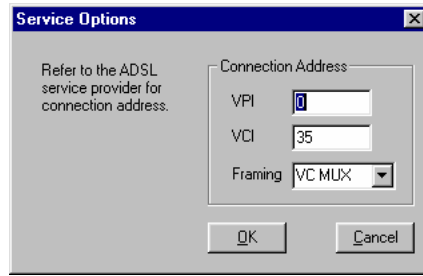


5. The **Copying Files** window appears. Enter <CD drive letter> :\PPPoA9x (e.g. D:\PPPoA9x) and click **OK**.
6. When the Service Option window appears, click **Next** for the default installation. For Advanced settings, please consult your ADSL service provider for detailed information.

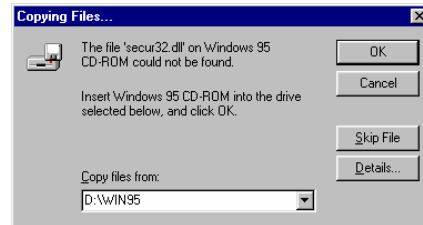


**Alcatel Speed Touch™ PC
Installation Guide**

NOTE: If you clicked **Advanced**, the **Service Options** window shows the **Connection Address**. Enter the service **Connection Address**, click **OK**. The previous **Service Option** window will appear, click **Next**.



Note: During the installation process you may be asked to insert your Windows 95. Insert the **Windows 95 CD** into the CD drive and click **OK**.



7. The **Copying Files** window will now appear. Enter <CD driver letter> :\WIN95 (e.g. D:\WIN95) and click **OK**.
8. At the conclusion of the Speed Touch PC driver installation, the Diagnostic Tool icon is active and monitoring connectivity. **Diagnostic Tool** with blinking or solid **Black or Green** lights indicates a good connection. **Diagnostic Tool** with **Red** lights indicates a connection error or driver load error. Verify that the cable is properly connected to the data port of the service and Speed Touch PC card.
9. You must now make a network connection, **go to page 21**.

POINT TO POINT SERVICE FOR WINDOWS 98, 98A

1. After installing the Speed Touch PC card and restarting the system, **the Add New Hardware Wizard** window will automatically appear and indicate that a new **PCI Network Controller** has been found. Click **Next**.

2. Then select **Search for the best driver for your device. (Recommended)**, click **Next**.



3. Insert the CD labeled **Alcatel Speed Touch PC Driver** into your CD drive.

4. Then select **Specify a location** and enter <CD drive letter> :\PPPoA9x (e.g. D:\PPPoA9x) and click **OK**. Click **Next**.

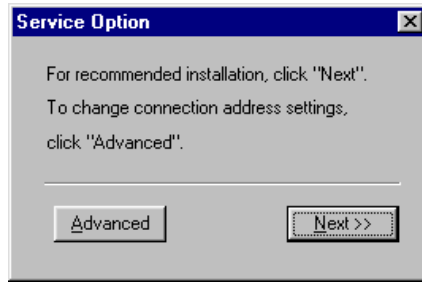


5. The **Add New Hardware Wizard** will find the **Alcatel SPEED TOUCH PC** driver. Click **Next**.

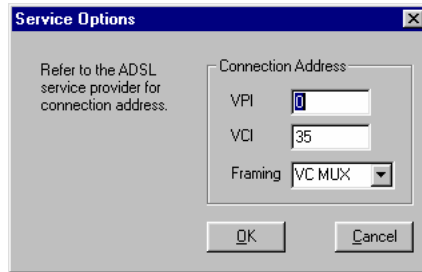


**Alcatel Speed Touch™ PC
Installation Guide**

6. When the **Service Option** window appears, click **Next** for the default installation. For Advanced settings, please consult your ADSL service provider for detailed information.



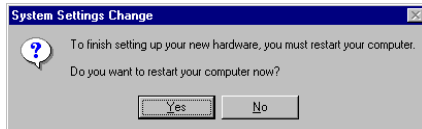
NOTE: If you clicked **Advanced**, the **Service Options** window shows the **Connection Address**. Enter the service **Connection Address**, click **OK**. The previous **Service Option** window will appear, click **Next**.



7. Additional files are copied from the Speed Touch PC disk to the hard drive. In addition, files are now copied from the Windows CD (system CAB files) to the hard drive.
8. If prompted to insert the CD do so at this time then click **OK**. Enter the <CD drive Letter>: \Win98 (e.g. D:\Win98) and click **OK**.
9. At the conclusion of the Speed Touch PC driver installation, click **Finish**.



10. For the PC system to properly set up the Speed Touch PC, a system **Restart** is required. Click **Yes**.



**Alcatel Speed Touch™ PC
Installation Guide**

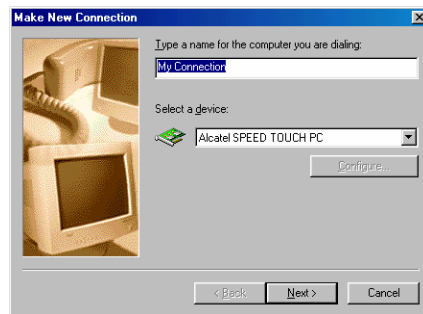
11. After restarting the system, the Diagnostic Tools icon is active and monitoring connectivity. The **Diagnostic Tools** – found on the task bar – with blinking (or solid) **Black or Green** lights indicate a good connection. **Diagnostic Tools** with **Red** lights indicate a connection error or driver load error. Verify that the cable is properly connected to the data port of the service and Speed Touch PC card.

12. You must now make a dial-up network connection. At the task bar, click on the **Start** icon, and then select **Programs, Accessories, Communications, followed by Dial-Up Networking**. Double-click the **Make New Connection** icon.



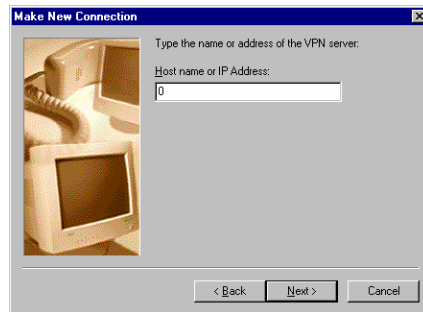
Note: Another dialog window may prompt for the entry of the **Area Code** if this is a first time Dial-Up Network connection. Enter the Area code and click **OK**.

13. Enter the connection name (e.g. **My Connection**) and set the connection device to the **Alcatel SPEED TOUCH PC**.



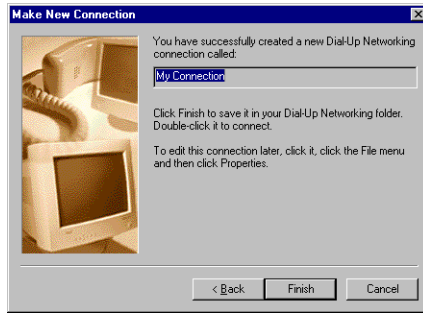
NOTE: use the scroll down menu to locate **Alcatel SPEED TOUCH PC**; then click **Next**.

14. Enter the **Host Name or IP Address** if provided by your ISP, otherwise enter (0) zero, and then click **Next**.



**Alcatel Speed Touch™ PC
Installation Guide**

15. **Make New Connection** is complete. Click **Finish**.



16. The new connection will appear in the Dial-Up Networking window.

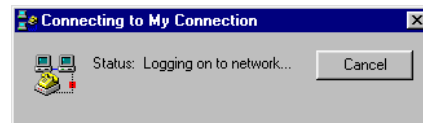
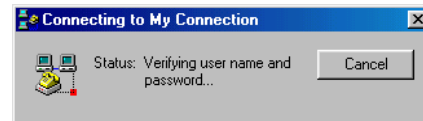


17. Double-click the **My Connection** icon to begin a Dial-Up session.

18. Enter the **User Name** and **Password** supplied by the Internet service provider. Click **Connect**.



19. The message **Logging on to network** confirms a valid **user name, password, and VPN IP address**. Please wait for the Connection Established window before proceeding.



Note: If logon domain is required, enter **username, password** and logon **domain** supplied by your ISP.

**Alcatel Speed Touch™ PC
Installation Guide**

20. The **PPPoA** service connection is now established. Click **Close** and the **PPPoA** icon appears on the task bar.

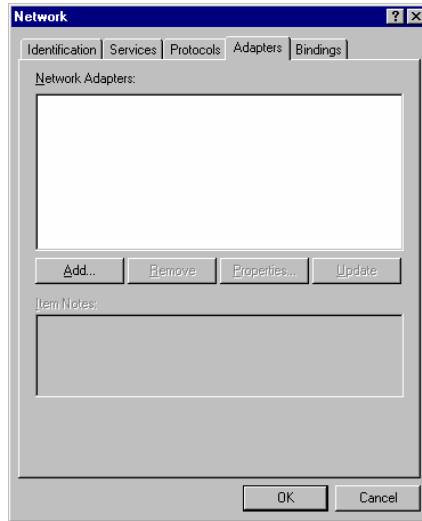
Congratulations, you are done. Your Speed Touch to the Internet is established!



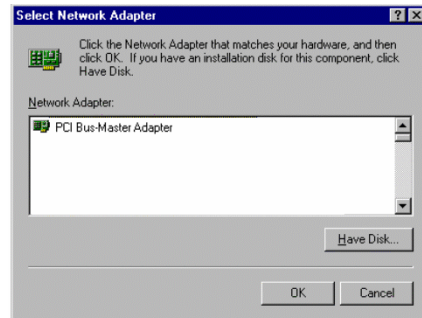
POINT TO POINT SERVICE FOR WINDOWS NT 4.0

Note: To perform the installation logon as **Administrator**. Also the TCP/IP protocol must be installed prior to the driver installation.

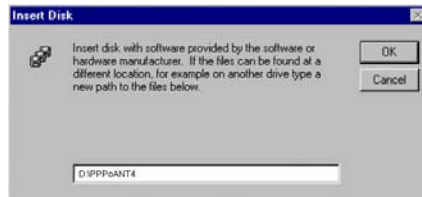
1. At the desktop, double click **My Computer**, then double click **Control Panel**.
2. In the Control Panel window, double click the **Network** icon then select the **Adapters** tab.
3. Click **Add** (to add new adapters).



4. In the **Select Network Adapter** window click **Have Disk**.



5. Insert the **Alcatel Speed Touch PC Device Driver** CD into the CD-ROM drive, enter the < CD drive letter> :\PPPoANT4 (e.g. D:\PPPoANT4), then click **OK**.



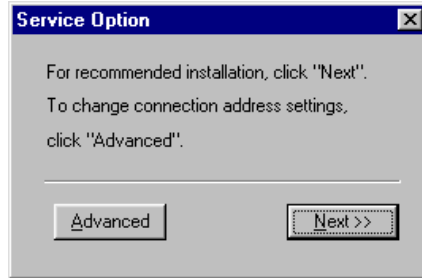
6. The **Select OEM Option** window will find the **Alcatel SPEED**



**Alcatel Speed Touch™ PC
Installation Guide**

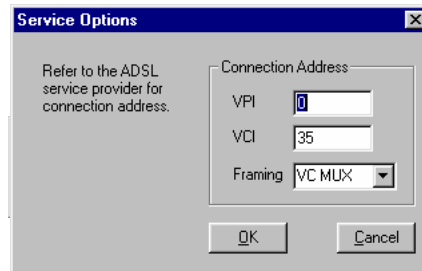
TOUCH PC driver, Click **OK**. The system will copy the drivers to the hard drive.

7. When the **Service Option** window appears, click **Next** for the default installation. For Advanced settings, please consult your ADSL service provider for detailed information.



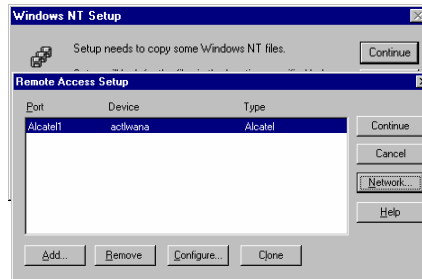
NOTE: If you clicked **Advanced**, the **Service Options** window shows the **Connection Address**. Enter the service **Connection Address**. Click **OK**. The previous **Service Option** window will appear, click **next**.

8. Next the Remote Access Services (RAS) will need to be installed. Click **OK** to continue.
9. Insert the Windows NT4.0 CD into the drive and in the space provided enter the path <CD drive letter>:\i386 (e.g. D:\i386) then click **Continue**.



10. The **Add RAS Device** window appears. Click **OK**

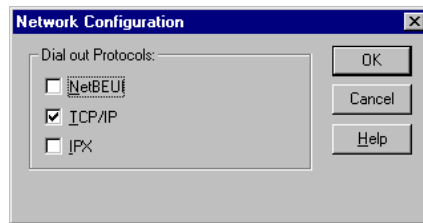
11. The **Remote Access Setup** will appear showing the **Alcatel Speed Touch PC** card. Click **Network** to display the network



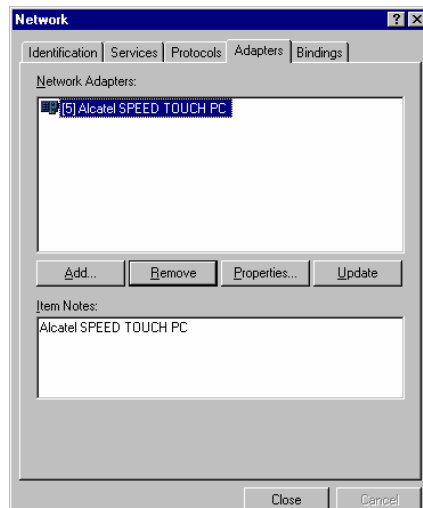
Alcatel Speed Touch™ PC Installation Guide

configuration.

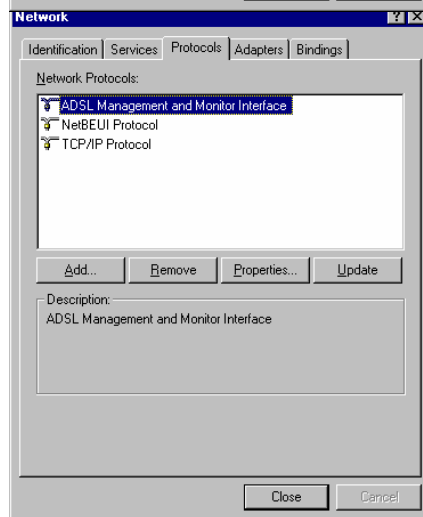
12. Select the protocol (e.g. TCP/IP), if a protocol has not been loaded the Windows NT 4.0 CD will be required. Click **OK**.



13. The **Network** window will appear at the conclusion of the installation to confirm installation of the Alcatel SPEED TOUCH PC.



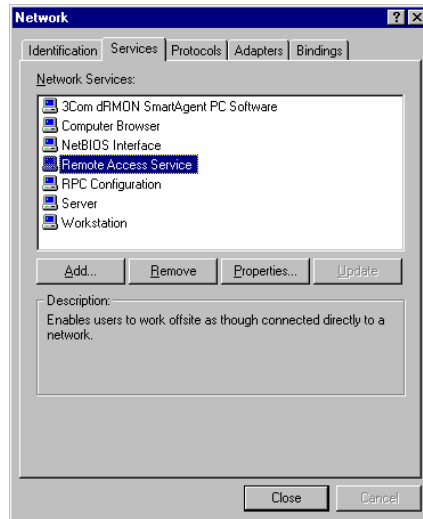
14. Click on **Protocols** tab and verify that the **ADSL Management and Monitor Interface** is present.



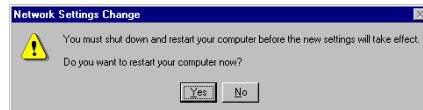
15. Still in the Network window, click on the **Services** tab to verify that the **Remote Access Service** is present. Click **Close**.

Note: To review the Network window properties at any time, right-click the **Network Neighborhood** icon and select **Properties**.

Note: If no previous network devices have been installed, then the Network Neighborhood icon will not be present on the desktop. To open the Network window, double-click **My Computer** then **Control Panel** then **Network**.

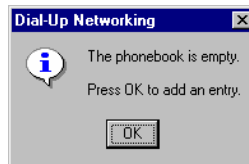
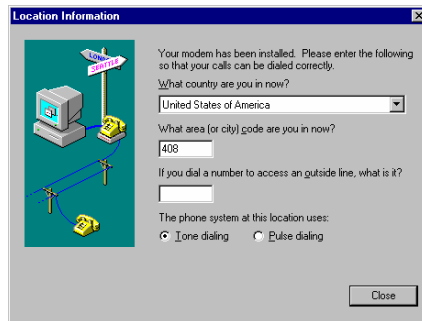
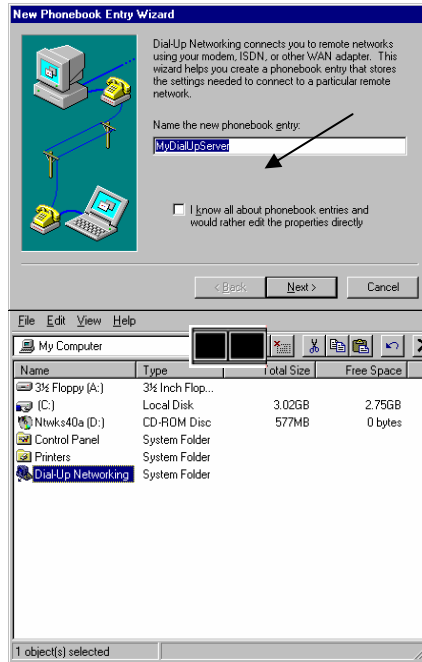


16. The PC system needs to be restarted for the changes to take effect. Click **Yes**

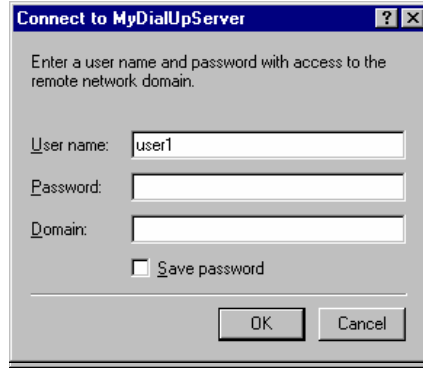


Alcatel Speed Touch™ PC Installation Guide

17. After the system restarts the Diagnostic Tools icon will appear on the task bar. When the Speed Touch PC card is connected to the ADSL data port, both panels of the icon will appear black signifying an ADSL connection.
18. To begin a dial-up connection, double-click **My Computer**, then double-click **Dial-Up Networking**.
19. If this is the first dial-up connection created enter an area code (e.g. 408) for your region, then click **Close**. If this is not your first dial-up, go to step 23.
20. Click **OK** to create a phonebook entry for a first time dial-up connection.
21. Enter a name for the phonebook entry (e.g. MyDialUpServer) and click **Next**.

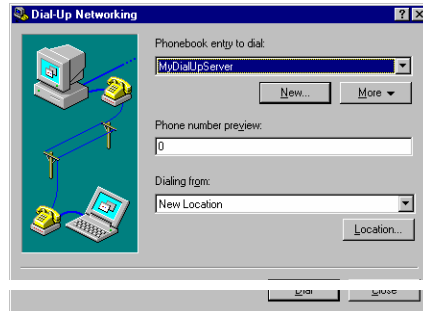


22. When the **Server** window appears click **Next**.



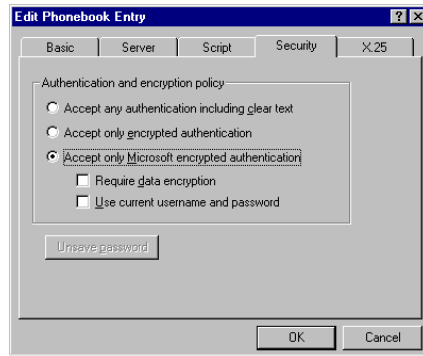
23. The **Dial-Up Networking** window prompts for the phone number of the dial-up server. Unless instructed to enter a phone number by the ISP, enter zero "0" Still at the **Dial-Up Networking** window, click **More**.

24. The **Edit Phonebook Entry** window appears. Select the **Security** tab and verify that "Accept only Microsoft encrypted authentication " is selected. Click **OK**. The previous **Dial-Up Networking** window appears, click **Dial**.



25. The **Connect to MyDialUpServer** window appears. Enter the **User name**, **Password** and **Domain**, then click **OK**.

Note: Refer to you ADSL Worksheet for this information or contact your ISP provider.



**Alcatel Speed Touch™ PC
Installation Guide**

Note: The text “**Verifying username and password...**” will be displayed while logon authentication takes place.

Note: If this screen persists and a connection logon error is reported, confirm that the correct Username and Password are entered and try the connection again. Also verify that the connection address is correct.

26. This window is displayed at the completion of a successful Dial-Up logon. Choose a display behavior and click **OK** to close.

Congratulations, you are done. Your Speed Touch to the Internet is established!



PPPoA ADSL NETWORK CONNECTION

Note: This section is for Win95A, 95B and 98 users only.

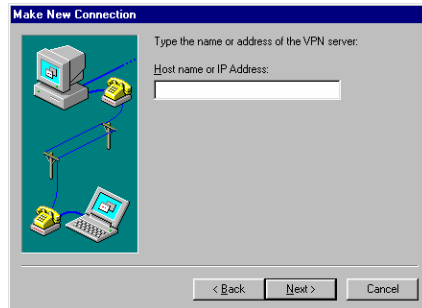
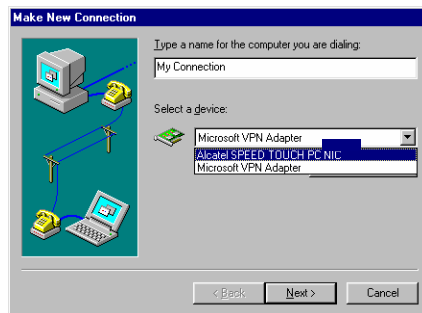
1. Double click the **My Computer** icon on the desktop. Then double click the **Dial-Up Networking** icon. The Dial-Up Networking window will appear.

Note: Another dialog window may prompt for the entry of the **Area Code** if this is a first time Network connection. Enter the Area code and click **OK**.

2. Double-click on the **Make New Connection** icon.
3. Enter the connection name (**e.g. My Connection**) and set the connection device to **Alcatel SPEED TOUCH PC**.

NOTE: use the scroll down menu to locate the **Alcatel Speed Touch PC** card; then click **Next**.

4. Enter the **Host Name** or **IP Address**, if provided by your ISP, otherwise enter (0) zero, and then click **Finish**.



**Alcatel Speed Touch™ PC
Installation Guide**

5. The new connection will appear in the **Dial-Up Networking** window. Double-click the **My Connection** icon to begin a Dial-Up session.



6. Enter the **User Name** and **Password** supplied by the Internet service provider. Then click **Connect**.

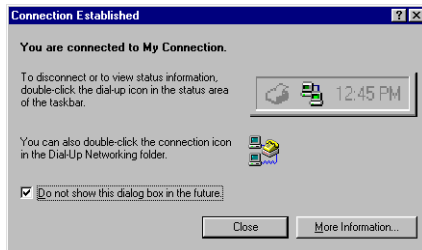
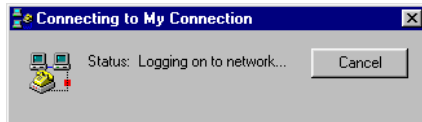
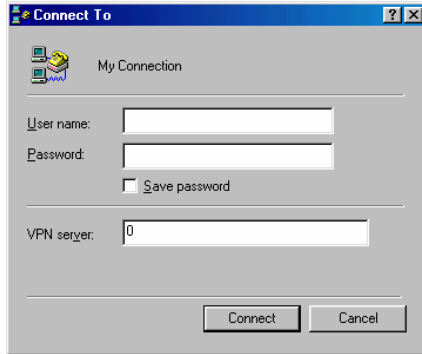
Note: The Virtual Private Network server name (or IP address) has been previously entered.

7. The Connection window reports the status of a connection. The message Logging on to network confirms a valid connection.

Note: If logon domain is required, enter **username**, **password** and logon **domain** supplied by your ISP.

8. The PPPoA service connection is now established. Click **Close** and the **PPPoA** icon is transferred to the task bar.

**Congratulations, you are done.
Your Speed Touch to the Internet is established!**

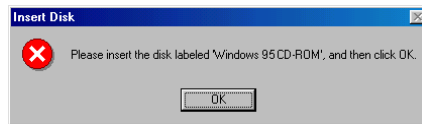
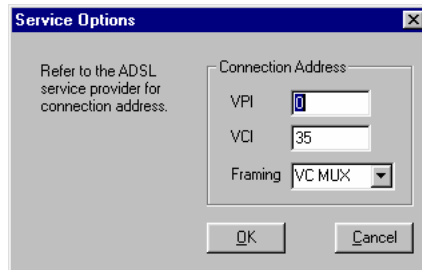
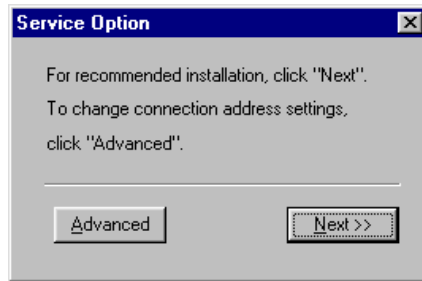
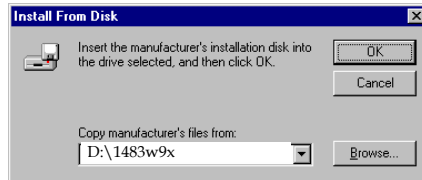
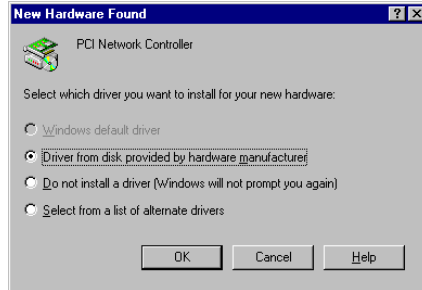


BRIDGED ETHERNET SERVICE FOR WINDOWS 95A

1. After installing the **Speed Touch PC** card, power on the PC system. The Hardware Wizard will detect the Speed Touch PC as a **PCI Network Controller**. Select the **Driver from disk provided by hardware manufacturer** option.
2. Insert the Alcatel Speed Touch PC Device Driver CD into the drive.
3. The **Install From Disk** window appears. Enter the <CD drive letter> :\1483w9x (e.g. D:\1483w9x), then click **OK**.
4. When the **Service Option** window appears, click **Next** for the default installation. For Advanced settings, please consult your ADSL service provider for detailed information.

NOTE: If you clicked **Advanced**, the **Service Options** window shows the **Connection Address**. Enter the service **Connection Address**, click **OK**. The previous **Service Option** window will appear, click **Next**.

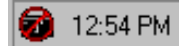
NOTE: If prompted, insert your Windows 95 CD into the drive and click **OK**.



**Alcatel Speed Touch™ PC
Installation Guide**

NOTE: If during the file copying process a file is reported as “not found” enter the path <CD drive letter> :\Win95 (e.g. D:\Win95)

5. At the conclusion of the Speed Touch PC driver installation, the **Diagnostic Tool icon** will appear disabled on the task bar. You must now **Restart** the PC system to complete the installation; the Diagnostic Tool will then become active.
6. Proceed to Bridged Ethernet ADSL Service Configuration; page 29.



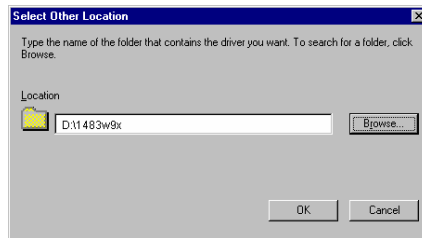
BRIDGED ETHERNET SERVICE FOR WINDOWS 95B

1. After installing the Speed Touch PC card, power-up the PC System.

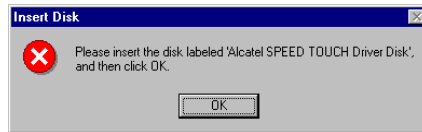
2. The Hardware wizard will detect the Alcatel Speed Touch PC as a **PCI Network Controller**, click **Next**. Insert the **Alcatel Speed Touch PC Driver CD** into the CD-ROM drive. Click **Other Locations**.



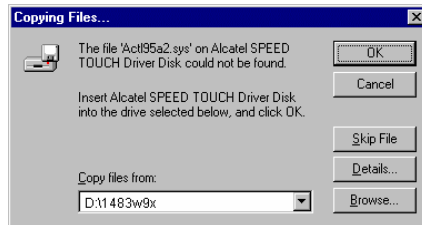
3. When **Select Other Location** window appears, enter <CD drive letter> :\1483w9x (e.g. D:\1483w9x) and click **OK**.



4. The **Update Device Driver Wizard** window appears. Click **Finish**. The **Insert Disk** window appears. Click **OK**.



5. The **Copying Files** window appears, enter <CD drive letter> :\1483w9x (e.g. D:\1483w9x) and click **OK**.



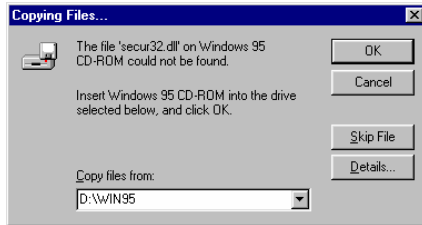
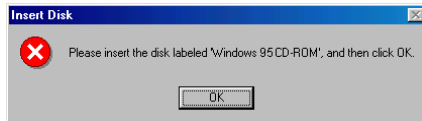
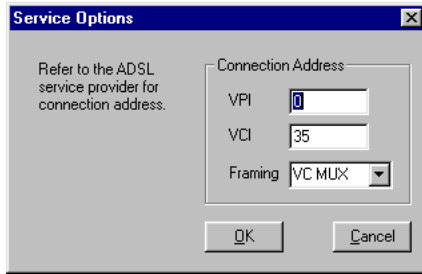
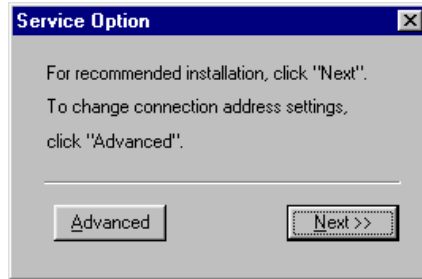
**Alcatel Speed Touch™ PC
Installation Guide**

- When the **Service Option** window appears, click **Next** for the default installation. For Advanced settings, please consult your ADSL service provider for detailed information.

NOTE: If you clicked **Advanced**, the **Service Options** window shows the **Connection Address**. Enter the service **Connection Address**, click **OK**. The previous **Service Option** window will appear, click **Next**.

Note: If your **Windows 95B CD** is not already in the drive, then the **Insert Disk** window will appear. Insert the **Windows 95B CD** in the drive now. Then click **OK**.

- The **Copying Files** window will now appear. Enter <CD drive letter> :\WIN95(e.g. D:\WIN95) and Click **OK**.
- Proceed to Bridged Ethernet ADSL Service Configuration; page 29.



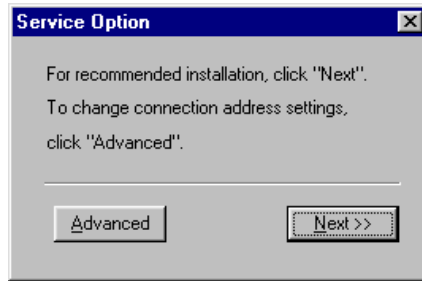
BRIDGED ETHERNET FOR WINDOWS 98, 98A

1. After installing the Speed Touch PC card and restarting the system, the **Add New Hardware Wizard** window will automatically appear and indicate that a new **PCI Network Controller** has been found. Click **Next**.
2. Then select **Search for the best driver for your device**. Click **Next**.
3. Insert the CD labeled **Alcatel Speed Touch PC Driver** into your CD-ROM drive.
4. Then select **Specify a location**, enter <CD drive letter>:\1483w9x (e.g. D:\1483w9x) and Click **Next**.
5. The **Add New Hardware Wizard** will find the **Alcatel Speed Touch PC** card driver. Click **Next**.

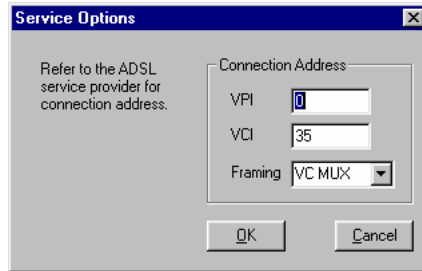


**Alcatel Speed Touch™ PC
Installation Guide**

- When the **Service Option** window appears, click **Next** for the default installation. For Advanced settings, please consult your ADSL service provider for detailed information.

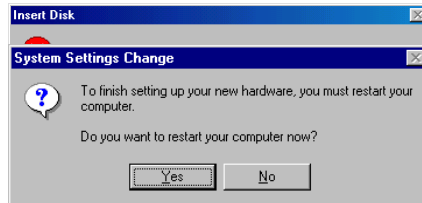


- NOTE:** If you click **Advanced**, the **Connection Address** window appears. Enter the Service connection address, click **OK**. The previous **Service Options** window will appear, click **Next**.



- NOTE:** If prompted, insert your Windows 98 CD-ROM into the drive and click **OK**.

- When the **System Settings Change** window appears and asks, "Do you want to restart your computer now?" Remove the driver CD and click **Yes**.

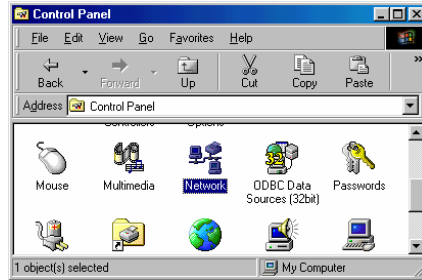


- Proceed now to Bridged Ethernet ADSL Service Configuration page 29.

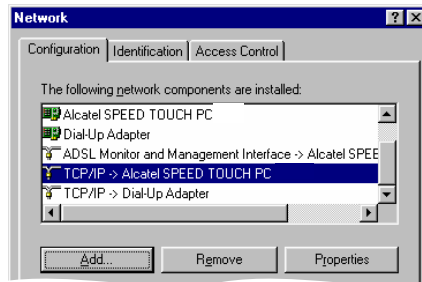
BRIDGED ETHERNET ADSL SERVICE CONFIGURATION

This section describes how to configure the ADSL network service when your PC is running Microsoft Windows 95A, 95B, 98, 98A.

1. Double click **My Computer**, **Control Panel**, and then **Network**.

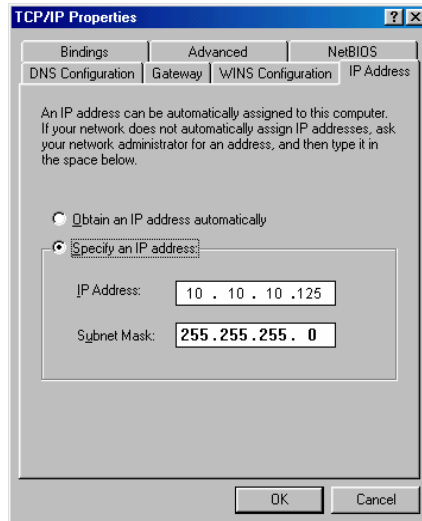


2. In the **Network** window, select the **Configuration** tab.
3. Scroll through the loaded network components list. Highlight the **TCP/IP->Alcatel SPEED TOUCH PC** and click **Properties**.



NOTE: In Win95/95A/95B, you may not find **TCP/IP->Alcatel Speed Touch PC** card. If this is the case, find and select the **TCP/IP** and click **Properties**.

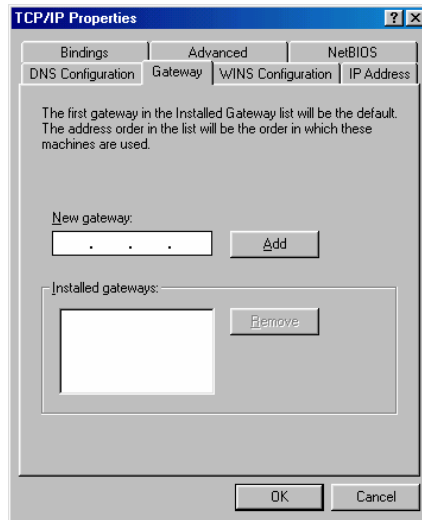
4. The **TCP/IP Properties** window appears. Select **IP Address** tab. Select **Specify an IP address**. The **IP address** and **Subnet Mask** will turn from gray to clear. Enter your **IP Address** (i.e. 10.10.10.125). and **Subnet Mask** (i.e. 255.255.255.0).
5. **NOTE:** Please refer to ADSL System Work Sheet, or consult your ISP for the TCP/IP Properties.



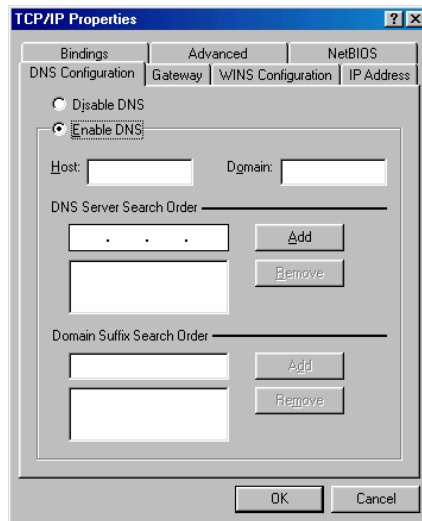
**Alcatel Speed Touch™ PC
Installation Guide**

6. Select the **SGateway** tab. Enter your gateway information into the **New gateway** box and click **Add**. If you have more than one gateway numbers, repeat this step

NOTE: Please refer to ADSL System Work Sheet, or consult your ISP for the TCP/IP Properties.



7. Select **DNS Configuration** tab. Select the **Enable DNS** option.
8. Enter your host name into **Host:** box.
9. Enter your domain name into **Domain:** box.
10. Enter DNS number into **DNS Server Search Order** box and click **Add**. If you have more than one DNS numbers, repeat this step.
11. **NOTE:** Please refer to ADSL System Work Sheet, or consult your ISP for the TCP/IP Properties.

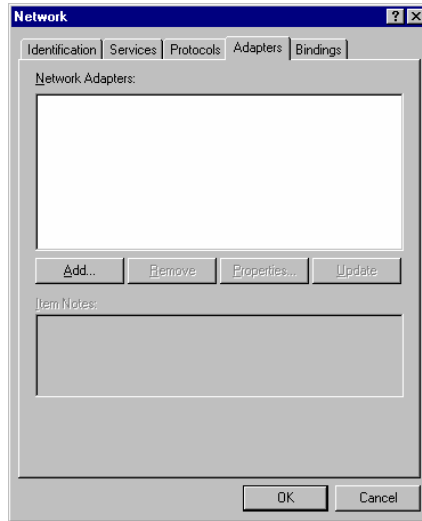


12. After completed filling all necessary data for TCP/IP properties, click **Ok** and the system will ask you to restart. Click **Ok** to restart the system. After the system restarts, configure the Internet browser. Once the Internet browser is configured properly, you will enjoy high-speed access to Internet with your Alcatel Speed Touch PC.

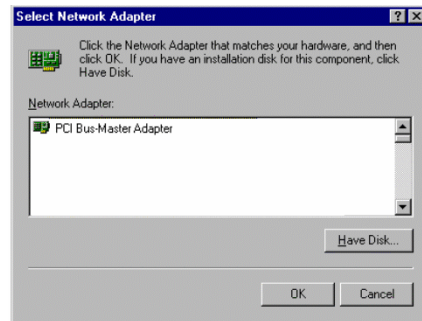
BRIDGED ETHERNET FOR WINDOWS NT 4.0

Note: To perform the installation logon as **Administrator**. TCP/IP protocol must be installed prior to the driver installation. At the **Network** window select the **Protocols** tab and verify that the TCP/IP is present.

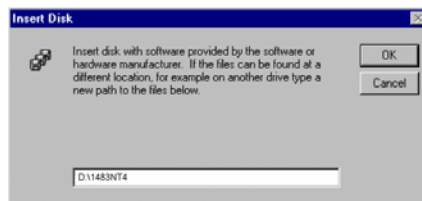
1. At the desktop, double click **My Computer**, double click **Control Panel**, double click **Network** and then select the **Adapters** tab of the **Network** window.
2. Click **Add** (to add new adapters).



3. In the **Select Network Adapter** window click **Have Disk**.

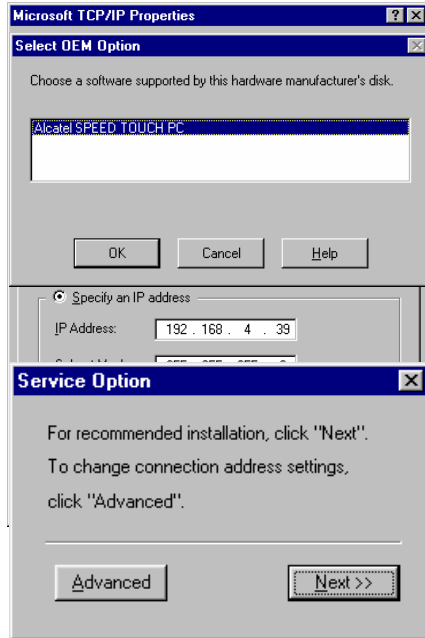


4. Insert the **Alcatel Speed Touch PC driver CD** into the drive, enter the < CD drive letter> :\1483NT4 (e.g.D:\1483NT4) and click **OK**.



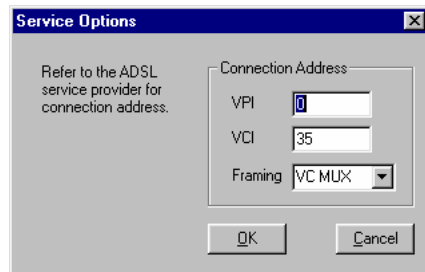
**Alcatel Speed Touch™ PC
Installation Guide**

5. The **Select OEM Option** window will find the **Alcatel SPEED TOUCH PC** card. Click **OK**. The system will copy the drivers to the hard drive.



6. When the **Service Option** window appears, click **Next** for the default installation. For Advanced settings, please consult your ADSL service provider for detailed information.

Note: If you click **Advanced**, the **Service Options** window appears. Enter the service Connection Address, click **OK**. The previous **Service Option** window will then appear, click **Next**. Then the **Network** window will appear, click **Close**.



7. The **TCP/IP Properties** window will appear and prompt the user for

Alcatel Speed Touch™ PC Installation Guide

information. When not connecting to a DHCP server, enter the **IP address** (e.g. 192.168.4.39).

8. Enter the **Subnet Mask** (e.g. 255.255.255.0).
9. Enter the **Default Gateway** address.

Note: Consult your ISP for the TCP/IP Properties.

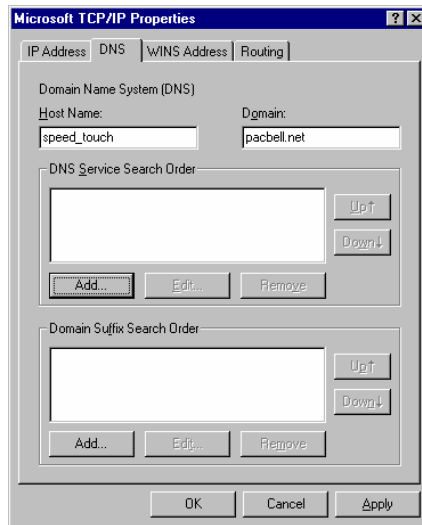
10. Select the DNS Configuration tab and enter the **Host Name** (e.g. speed_touch)
11. Then enter the **Domain Name** (e.g. pacbell.net)

Note: Use the DNS Service Search and Domain Suffix Search to locate the Host Name and Domain. Click **Add** to save the address. Repeat the process for additional DNS entries.

12. Click **OK** to update the changes.
Note: Consult your ISP for the TCP/IP Properties.

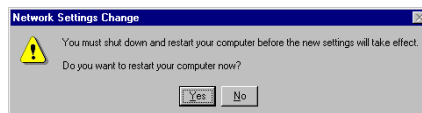
13. The system must be restarted for the changes to take effect. Click **Yes** to restart.

Congratulations, your Speed Touch to the Internet is established!



EDITING BRIDGED ETHERNET ADSL SERVICE CONFIGURATION

1. This section includes the IP configuration specifics for Windows NT4.0. The NT 4.0 windows are slightly different from those of Windows 95 /98. Other than these



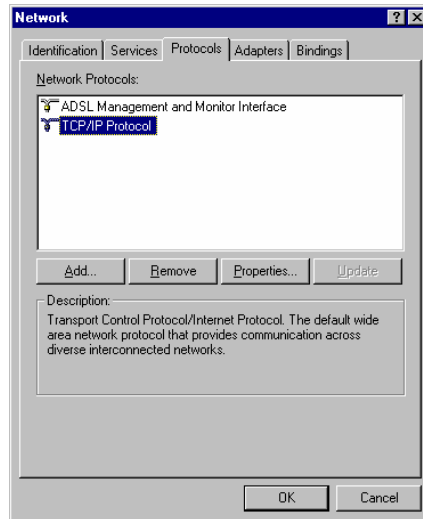
Alcatel Speed Touch™ PC Installation Guide

illustrative differences, the process for editing the IP address settings is the same for Windows NT 4.0 and Windows 95/98.

2. At the desktop, double click **My Computer**, then double click **Control Panel** to view the contents of the control panel. In the Control Panel window, double click the **Network** icon.

Note: The Network window shortcut is a right-click the **Network Neighborhood** on your desktop then left-click **Properties**.

3. Select the **Protocols** tab of the network window. Select **TCP/IP** Protocol and click **Properties**.



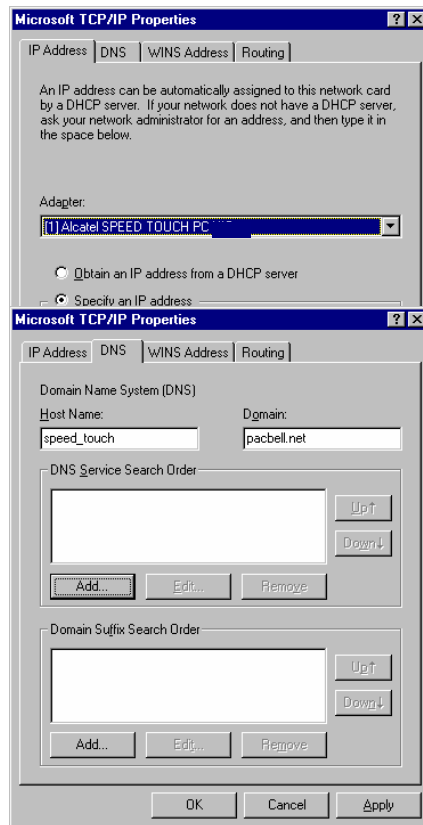
4. Select the **IP address** option and note that the IP Address and Subnet Mask regions will turn from gray to active.

5. Enter the IP Address (e.g. 192.168.4.39) and subnet mask (e.g. 255.255.255.0).

6. The Default Gateway is also entered in this window.

Note: Please refer to your ISP for the TCP/IP Properties.

7. Select the **DNS** configuration tab and enter (or edit) the following fields:



**Alcatel Speed Touch™ PC
Installation Guide**

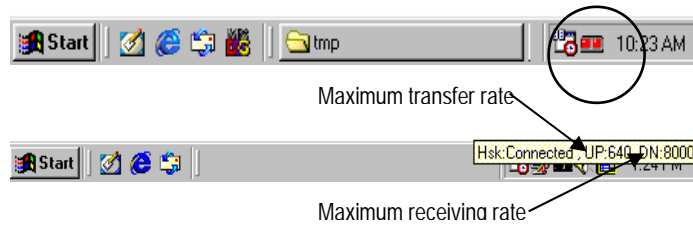
8. Enter the **Host Name** (e.g. speed_touch) and **Domain** (e.g. pacbell.net).

Note: To enter the Domain search (DNS) entries, click **Add** then enter the address. Click **Add** to save the address. Repeat the process for additional DNS entries.

9. Click **OK** to update the changes.

DIAGNOSTIC TOOLS

The diagnostic tools allow the user to monitor the ADSL connectivity, setup the service connection address, and run diagnostic tests. The Diagnostic Tools icon is displayed on the task bar as shown.



By positioning the mouse cursor over the icon, a summary of the ADSL connection status is displayed e.g. upstream and downstream line rates.

The Diagnostic Tools icon consists of two lights side by side. The left light indicates data is being transmitted whereas the right light indicates data is being received. The state of the connection can be determined as follows:

Color Code	Description
Red, Red	No ADSL connection and No ADSL handshaking. Check your cable connections.
Black/Yellow or Yellow/Black flashing	ADSL handshaking – Connection not established. Precursor to establishing an ADSL connecting.
Black, Black	ADSL connection established – no data traffic or idle connection
Black, Green	ADSL connection established – NIC is receiving data (TX/off, RX/on)
Green, Black	ADSL connection established – NIC is transmitting data (TX/on, RX/off)
Green, Green	ADSL connection established – NIC is transmitting and receiving data (TX/on, RX/on)
∅	NIC is disconnected or a driver problem exists. Try using Connect command in Diagnostic Tools. If persists, restart the PC system and last resort reload the drivers.

APPENDIX A - UPGRADE MICROSOFT DUN VERSION 1.3

This section explains how to upgrade Microsoft's Dial-Up Networking (DUN) application. You can download the DUN application from Microsoft's Web page and install it into your system. Please follow the instruction below.

1. Access the Microsoft Web site at <http://www.microsoft.com>.
2. In the **Contents** frame, select **Free Downloads**.
3. Scroll to **Support Drivers, Patches and Service Packs** and select **Windows 95 Updates**. The Microsoft **Windows 95 Downloads** page appears.
4. Select **Windows 95** in the select a product or feature box.
5. Select **Networking & Communications** in the **Select a category** box.
6. Click **Go**. The **Windows Dial-Up Networking 1.3 Performance and Security Upgrade for Windows 95** is listed.
7. Click this hyper-link to access the **Windows Dial-Up Network 1.3 performance and Security Upgrade for Windows 95** page.
8. Click the **Download Now** hyper-link in the upper right corner of the page. The MSDUN1.3 download page appears.
9. Click the link to the download site nearest you. The program prompts you for a directory to download the MSDUN13.EXE file.
10. Specify a directory. The MSDUN13.EXE file is then downloaded to this directory. The Dial-UP Networking 1.3 Performance & Security Upgrade (MSDUN13.EXE) must be installed to setup a dial-up connection to your corporate headquarters or your ISP.

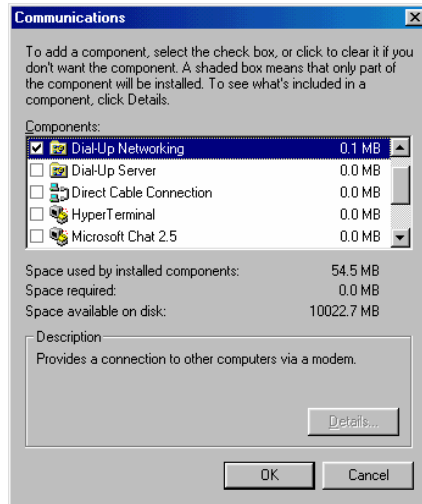
Note: During the installation, you will be asked to restart your workstation. Make sure you save your work and exit from all applications (except Internet browser) before beginning the installation.

1. At your desktop, click **Start**, and select **Run** from the menu. The Run window appears.
2. Specify the path for the MSDUN13.EXE file in the Open box and click **OK**. This will install Microsoft Dial-Up Networking 1.3 for Windows 95/95A. Click **Yes** to continue.
3. Click **Yes** on the End-User License Agreement window.
4. Restart your system. After you restart your system, the Microsoft Dial-Up Networking should be ready to support ADSL PPPoA service. Please verify this before proceeding. Go to next section - Verifying Dial-Up Networking (DUN) Status.

APPENDIX B – VERIFYING DIAL-UP NETWORKING (DUN) STATUS

1. It is possible to have Dial-Up Networking (DUN) version 1.2B or above, but not have the Dial-Up Networking components loaded in the Windows environment. This procedure is for determining the status of DUN on the PC system.
2. At the task bar click **Start, Settings, Control Panel** and double-click on **Add/Remove Programs**.
3. In **Add/Remove Programs Properties**, choose the **Windows Setup** Tab and wait for Setup to complete the search for all installed components. Select (i.e. highlight) the **Communications** component and click **Details**.
4. If **Dial-Up Networking** is installed, then a **check mark** will appear next to the entry.
5. To select Dial-Up Networking, place a **check mark** next to the DUN component and click **OK**.

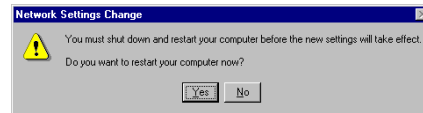
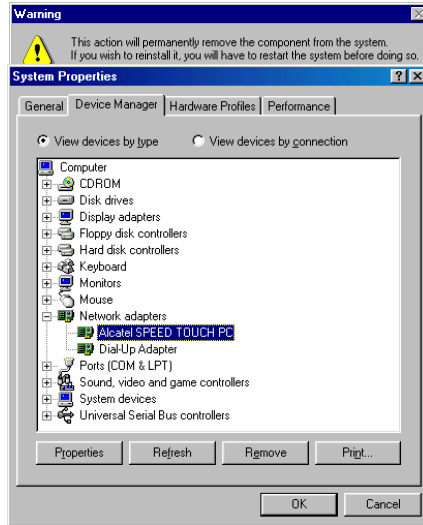
The **Windows CD-ROM** (or Cab file access) are required to complete the installation. Have the **Windows CD-ROM** ready for use.



APPENDIX C – REMOVING SPEED TOUCH PC DRIVERS

WINDOWS 95, 98

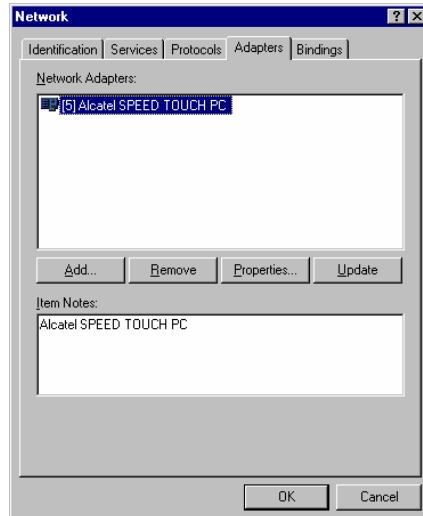
1. To Delete **Alcatel Speed Touch PC** drivers; on the desktop, right-click on **My Computer**, then click **Properties**, then click on the **Device Manager** tab, then double click **Network adapters**.
2. Select the **Alcatel SPEED TOUCH PC**, then click on the **Remove** button.
3. A warning message “You are about to remove this device from your system” will appear. Click **OK** to remove drivers or click **Cancel** to abort the driver removal.
4. The PC system must be restarted for the changes to take effect. Click **Yes**.



WINDOWS NT4.0

Note: For driver removal, you need to logon as **Administrator**.

1. On the desktop; double click **My Computer**, double click **Control Panel**, double click the **Network** icon and select the **Adapters** tab.
2. Select the **Alcatel SPEED TOUCH PC** adapter, then click **Remove**.

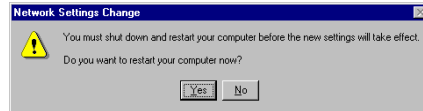


**Alcatel Speed Touch™ PC
Installation Guide**

3. A warning message will inform you that a component is about to be removed. Click **Yes**.

4. Once the Alcatel SPEED TOUCH PC is removed from the adapter list, click **Close**.

5. The PC system must be restarted for the changes to take effect. Click **Yes**.



APPENDIX D:

Power Requirements

- .75A Max @ +5V ± 5%, 0.1A max @ ± 12V, ± 5%

Environmental Requirements

- Operating Temperature: 0 °C to 70°C with airflow
- Non-operating Temperature: -10 °C to 85 °C
- Operating Humidity: 10% to 90% non-condensing
- Non-operating storage humidity: 5% to 95% non-condensing

Compliance Certification

- UL 1950
- CE approved
- FCC Part 15 Class B

APPENDIX E:

Copyright © 1999, Integrated Telecom Express, Inc. All rights reserved.

This manual and software described in it are copyrighted with all rights reserved. This manual may not be copied, in whole or in part, without the written consent of Integrated Telecom Express, Inc. Speed Touch PC is a trademark of Alcatel. All other product names are trademarks and or registered trademarks of their respective companies.

Part Number 44-060014-000

FCC Statement

This equipment has been tested and found to comply with the limits for a Class B digital device, pursuant to Part 15 of the FCC Rules. These limits are designed to provide reasonable protection against harmful interference in a residential installation. This equipment generates, uses and can radiate radio frequency energy and, if not installed and used in accordance with the instructions, may cause harmful interference to radio communications. However, there is no guarantee that interference will not occur in a particular installation. If this equipment does cause harmful interference to radio or television reception, which can be determined by turning the equipment off and on, the user is encouraged to try to correct the interference by one or more of the following measure:

- Reorient or relocated the receiving antenna.
- Increase the separation between the equipment and receiver.
- Connect the equipment into an outlet on a circuit different from that to which the receiver is connected.
- Consult the dealer or an experienced radio/TV technician for help.
- Shielded cables must be used to comply with FCC regulations.

Please direct any queries on this product or request for information on other Alcatel products to www.alcateldsl.com